

References:

1. Pollart SM, Smith TF, Morris E, Gelber LE, Platts-Mills TAE, Chapman MD. Environmental exposure to cockroach allergens: analysis with monoclonal Antibody based enzyme immunoassays. *J Allergy Clin Immunol* 87:505-510, 1991.
2. Gelber LE, Seltzer LH, Bouzoukis JK, Pollart SM, Chapman MD, Platts-Mills TAE. Sensitization and exposure to indoor allergens as risk factors for asthma among patients presenting to hospital. *Amer Rev Respir Dis* 147:573-578, 1993.
3. Rosenstreich DL, Eggleston P, Kattan M, Baker D, Slavin RG, Gergen P, Mitchell H, McNiff-Mortimer K, Lynn H, Ownby D, Malveaux F. The role of cockroach allergy and exposure to cockroach allergen in causing morbidity among inner-city children with asthma. *New Eng J Med* 336:1356-1363, 1997.
4. Arruda LK, Vailes LD, Ferriani VP, Santos AB, Pomés A, Chapman MD. Cockroach allergens and asthma. *J Allergy Clin Immunol* 107:419-428, 2001.
5. Pomés A, Vailes LD, Helm RM, Chapman MD. IgE reactivity of tandem repeats derived from cockroach allergen, Bla g 1. *Eur J Biochem* 269:3086-3092, 2002.
6. Nalyanya G, Gore JC, Linker HM, Schal C. German cockroach allergen levels in North Carolina schools: comparison of integrated pest management and conventional cockroach control. *J Med Entomol* 46:420-427, 2009.



www.inbio.com

Indoor Biotechnologies, Inc.
700 Harris Street,
Charlottesville, VA 22903
United States

Indoor Biotechnologies Ltd.
Vision Court
Caxton Place
Cardiff, Wales CF23 8HA
United Kingdom

Indoor Biotechnologies,
India Private Limited
Bangalore Bioinnovation Centre,
BioTech Park, Electronic City Phase 1
Bangalore-560100, India

Tel: (434) 984-2304
Fax: (434) 984-2709
Email: mail@inbio.com

Tel: +44 (0) 29 2167 4640
Email: Info@indoorbiotech.co.uk

Tel: +91-9901722009
Email: info@inbioindia.com

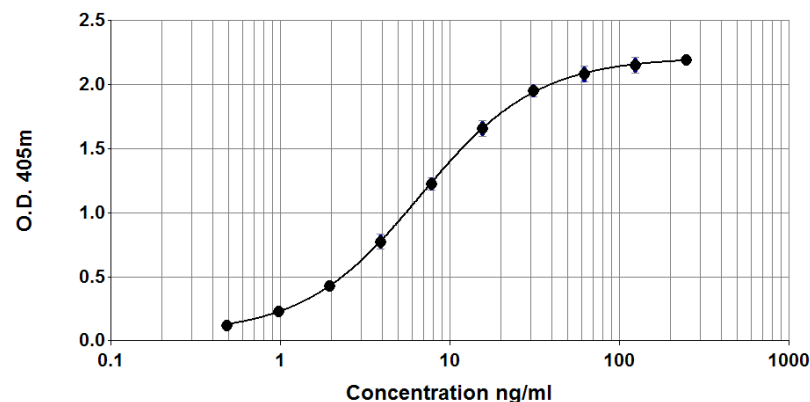


Bla g 2 ELISA kit (7C11/BG2)

Product Code: EL-BG2

Lot Number: XXXXX

Sample Curve:



Content:

Vial 1 (red top) 100 μ L
Monoclonal antibody 7C11

Vial 2 (white top) 400 μ L
Universal Allergen Standard
Concentration: 2500ng/ml

Vial 3 (brown) 100 μ L
Polyclonal Rabbit anti Bla g 2 antibody
Dilute: 1:1000 for use

Storage: The ELISA kit should be stored at 4°C

For research and commercial use in vitro: not for human in vivo or therapeutic use.

An InBio™ product

Certificate of Analysis

Monoclonal Antibody: 7C11 (clone 7C11 C2 A6)
 Immunogen: Bla g 2
 Isotype: Mouse IgG1
 Specificity: Binds to an epitope on cockroach *Blattella germanica* allergen, Bla g 2.
 Purification: Produced in ascites and purified by ammonium sulphate precipitation and affinity chromatography using Protein A. Single heavy and light chain bands on SDS-PAGE.
 Concentration: 1 mg/ml in phosphate buffered saline, pH 7.4. Based on A280 for IgG (1.42=1mg/ml), 0.22µm filtered, preservative free.
Lot Number: xxxxx

Antibody: Rabbit polyclonal antiserum
 Immunogen: Recombinant Bla g 2
 Isotype: Multiple
 Specificity: The antiserum contains IgG antibodies to cockroach *Blattella germanica* allergen, Bla g 2 and does not react with Bla g 1.
 Activity: Titrated for use in ELISA at 1/1000 dilution. Prepared in 1% BSA/50% glycerol/PBS, pH 7.4, 0.22µm filtered, preservative free.
Lot Number: xxxx

Allergen Standard: Universal Allergen Standard
 Composition: A formulation of eight purified natural allergens prepared in 1% BSA/50% glycerol/PBS, pH 7.4.
Lot Number: xxxxxx
 Concentration:

Universal Allergen Standard	Protein Measurement	Concentration (ng/ml)
Der p 1	Amino-acid analysis	2500
Der f 1	Amino-acid analysis	2500
Der p 2	Amino-acid analysis	1000
Fel d 1	Amino-acid analysis	1000
Can f 1	Amino-acid analysis	2500
Rat n 1	Amino-acid analysis	1000
Mus m 1	Amino-acid analysis	250
Bla g 2	Amino-acid analysis	2500

ELISA Protocol for Bla g 2.

- Coat polystyrene microtiter plates (NUNC Maxisorp Cert. NUNC catalog # 439454) with 100µl mAb 7C11 at 10µl/10ml, i.e. 1/1000 dilution of stock, in 50mM carbonate-bicarbonate buffer, pH 9.6, incubate overnight at 4°C.
- Wash wells 3x with PBS-0.05% Tween 20, pH 7.4 (PBS-T). Incubate for 30 min. at room temperature with 100µl/well of 1% BSA, PBS-T. Wash 3x with PBS-T.
- Use doubling dilutions of the Universal Allergen standard to make a control curve ranging from 250 - 0.5ng/ml Bla g 2: Pipette 20µl UAS into 180µl 1% BSA, PBS-T into wells A1 and B1 on the ELISA plate. Mix well and transfer 100µl across the plate into 100µl 1% BSA, PBS-T diluent to make 10 serial doubling dilutions. Wells A11, B11 and A12, B12 should contain only 1% BSA, PBS-T as blanks.
- Add 100µl of diluted allergen samples and incubate for 1 hour at room temperature. House dust extracts for Bla g 2 analysis are routinely diluted two-fold from 1/10-1/80. Other sample types, like air filter extracts and allergen extracts, may require different dilutions.
- Wash wells 3x with PBS-T and add 100µl diluted polyclonal Rabbit anti Bla g 2 antibody. The antibody solution contains 50% glycerol and should be diluted 1/1000 in 1%BSA, PBS-T. Incubate for 1 hour at room temperature.
- Wash wells 3x with PBS-T and add 100µl diluted Peroxidase conjugated Goat anti-Rabbit IgG (Jackson Laboratories Cat# 111-036-046, reconstituted in 1 ml distilled water and 1ml glycerol). The reconstituted Goat anti-Rabbit IgG should be diluted 1/1000 (i.e. 10µl/10ml) in 1% BSA, PBS-T. Incubate for 1 hour at room temperature.
- Wash wells 3x and develop the assays by adding 100µl 1mM ABTS in 70mM citrate phosphate buffer, pH 4.2 and 1/1000 dilution of H₂O₂. Read the plate when the absorbance at 405nm reaches 2.0-2.4.

Notes:

The Bla g 2 standard is recommended for immunoassay calibration purposes only. Not recommended for in-vitro antibody measurements, T cell studies, immunization purposes, or other uses.

Buffer recipes, storage conditions and a list of frequently asked questions can be found under "Protocols" on our web site: www.inbio.com.

For research and commercial use in vitro: not for human in vivo or therapeutic use.